

RESEARCH PAPER

A new species *Sureshia karjatensis* (Eucestoda : dilepididae) from *Micropus affinis*, at Karjat, M.S., India

D.K. MHAKSE, S.G. SURYAWANSHI, G.B. SHINDE AND S.B. PAWAR

Accepted : April, 2010

See end of the article for authors' affiliations

S.B. PAWAR

Department of Zoology,
Dnyanopasak College,
PARBHANI (M.S.) INDIA

ABSTRACT

The present paper deals with description of a new species of the genus, *Sureshia* Ali and Shinde, 1966 which differs from all the known species, in the size of scolex; in the number of hooks; number of segments; in number of testes; shape and size of cirrus pouch, shape; size and position of cirrus pouch and position of vagina

Key words : *Sureshia karjatensis*, *Micropus affinis*, Intestine

The genus *Sureshia* was erected by Ali and Shinde in 1966 with type species, *Sureshia micropusi* from Swift, *Micropus affinis*. Later on, twelve species were added to this genus. The present communication, deals with description of new species *Sureshia karjatensis* n.sp.

MATERIALS AND METHODS

Ten cestodes parasites were collected from the intestine of house swift, *Micropus affinis*. All were flattened, fixed and preserved in 4% formaline, washed in tap water for several times, stained in Harri's haematoxyline, dehydrated through various alcoholic grades, cleared in xylene, and whole mount slides were prepared for taxonomic and anatomical studies. Sketches were made with the help of camera lucida. All measurement are given in millimeter.

Description:

(Based on Fig. A,B,C)

All the worms were short, with scolex, immature and mature segments; scolex medium in size, almost oval in shape, conical in appearance, with armed rostellum, narrow anteriorly, broad posteriorly, 0.447-0.552 x 0.379-0.495; rostellum large, oval, muscular, armed, with single circle of hooks, 0.87-0.102 x 0.029-0.034; rostellar sac is elongated, cylindrical, muscular, extends posteriorly, upto posterior margin of suckers, 0.398 x 0.043-0.141; rostellar hooks are 18, arranged in single circle, medium, sharp, single pronged, 0.049-0.057 x 0.003-0.009; suckers 4, large, oval, arranged in two pairs, overlapping, on each other in each pair, occupy major portion of the scolex, 0.204-0.216 x 0.165-0.175; neck is absent; mature segments almost two times broader than long, 0.954-1.170

x 1.726-2.045; testes 55-60 (54) in number, large, almost round in shape, mostly pos-ovarian, in the central medulla, in single field, situated in posterior 2/3rd region of the segments, few on ovary and poral side, more on aporal side, bounded laterally by longitudinal excretory canals,

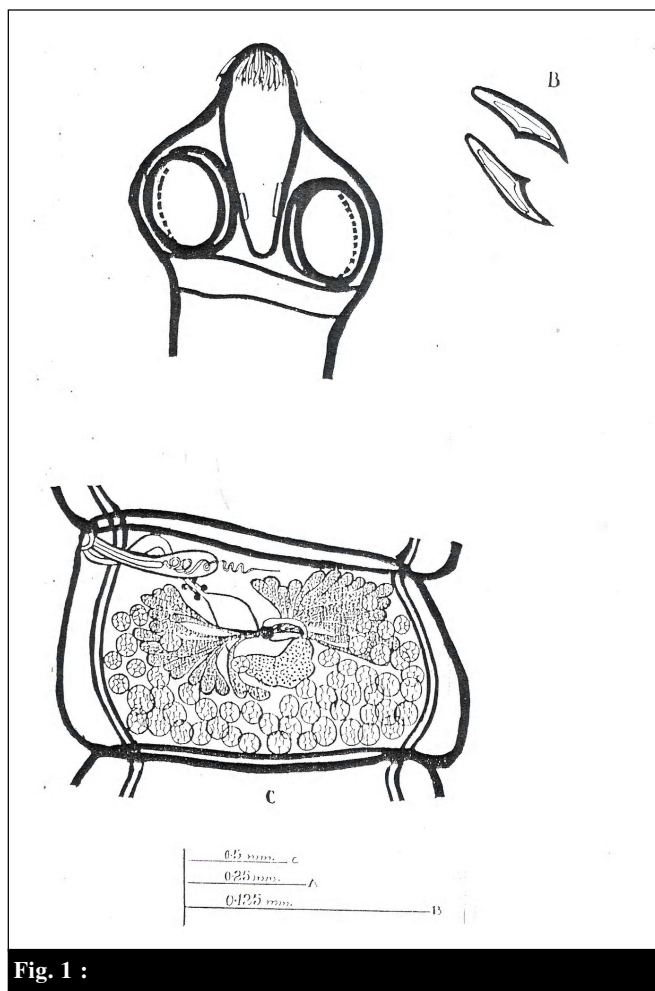


Fig. 1 :